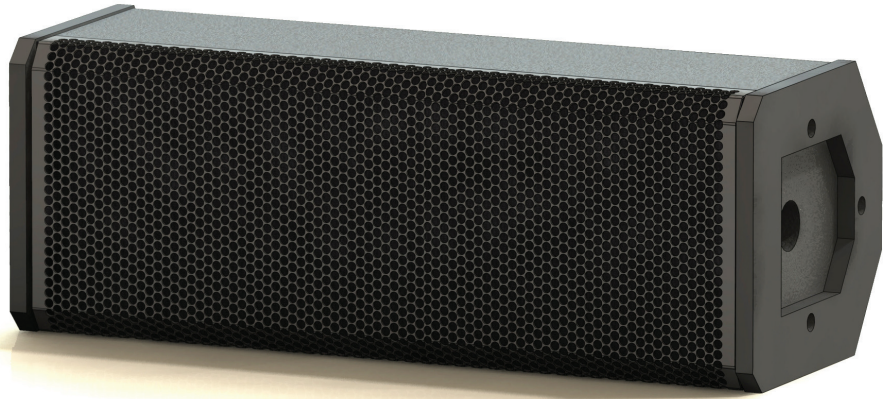


FF-2™ Compact Front Fill Loudspeaker

One of the challenges of any live production is ensuring that every seat in the house enjoys the same consistent sound quality and clarity. The Clair FF-2™ solves defined coverage issues with superior audio quality and an unobtrusive design, making it the ideal solution as a proximity fill, near field monitor, or portable distributed system.

A 1.5 inch compression driver coupled to a 60° V x 40° H proprietary waveguide provides clear high frequency, while a custom single 8 inch driver augmented by a dual port provides powerful low/mid frequency reproduction.



Measuring approximately 8 inches high and less than 23 inches wide, the compact FF-2 is engineered to blend seamlessly with the main sound system as a downstage edge fill, balcony fill, floor monitor or backstage cue monitor. Stand-alone applications include theaters, houses of worship, trade shows, auditoriums and corporate event systems.

Constructed of high density Finland Birch and rugged polyurethane end caps, the FF-2 includes truss and pole mounting options.

FF-2 Technical Data

Applications

Front Fill
Under Balcony
Near Field Monitor Delay

Features

2-Way Design
Low Profile Enclosure Size
Truss or Pole Mounting Options

Physical Data

Weight: 25 lbs. (45.5 kg)
Height: 8" (35.3 cm)
Width: 22.25" (56.5 cm)
Depth: 8.5" (50.8 cm)