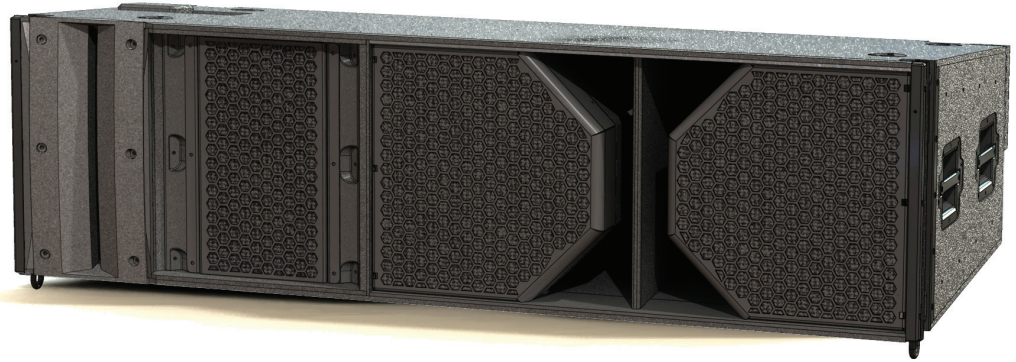


i-5D™ Vertical Array Loudspeaker

Clair's newest design has taken the very best from the i-5™ and i-5b and joined them into a single cabinet. The i-5D offers extremely consistent SPL and frequency response as well as the exceptionally clean, tight low frequency output throughout the venue, all from a single enclosure.

Each i-5D array module is available in dedicated stage left and stage right configurations, and has a defined horizontal coverage pattern of 90°. The completely expandable system consists of three proprietary vertical coverage patterns: long throw; medium throw; and near throw (available in 90° and 120° horizontal dispersion for additional nearfield coverage).



Using Clair AlignArray™ rigging and prediction software, the i-5D can be flown and positioned faster, more safely, and with more accuracy than existing line array systems. All necessary rigging hardware is integrated into the cabinet, and includes dual front locking devices and a rear adjustment bar with a quick-release pin, allowing the speaker array to be adjusted from 0° to 10° at fine resolutions when suspended. Proprietary prediction software calculates array angles, array weight and rigging details.

i-5D Technical Data

Applications

Stadiums
Arenas
Theaters
Amphitheaters
Outdoor Festivals

Features

3-way Operation
Clair AlignArray™ Rigging
Custom Clair Software Files for Various Configurations

Physical Data

Weight: 435 lbs. (197 kg)
Height: 21.6" (54.8 cm)
Width: 76.9" (195 cm)
Depth: 31.5" (80 cm)